

Mini-Box

Industrial VPN Router

Remote supervision and technical assistance unit

- Connection to the internet via RJ45 cable (Ethernet), wireless (WiFi), or mobile (GSM, GPRS, 3G, 4G) networks.
 - Easy configuration using Web pages and/or SMS messages.
 - Do not requires a public IP address to reach the remote machinery.
 - Local network's firewall reconfigurations are not required.
 - All communications are encrypted and all activities are traced.
 - Local Wi-Fi Access Point and Firewall functions may be enabled in the machinery environment.
- Mini-Box:** is a device for remote management of automatic machinery wich allows, in conjunction with the BoxLinker software, to supervise, analyze and possibly diagnose problems and remotely update the software of such machinery at any time while sitting at your desk, thus avoiding expenses and reducing maintenance costs and response times.
- BoxLinker:** is a freeware Java application through wich the user can connect to the accredited Mini-Box to perform remote support, it comes free to the users and it's compatible with Windows®, Mac-OSX and Linux operating systems.
- AP-WiFi:** is a real WiFi Access-Point included into the Mini-Box. By activating AP-WiFi the Mini-Box make itself useful not only at aboard the machinery but also in their neighborhood, providing to installers and testers a convenient access to the internet without having to open electric frameworks or running cables.
- Integrated Firewall:** traffic encryption and authentication with X.509 certificates make the system safe and ensure the confidentiality of communications..



fig.1 – The Mini-Box

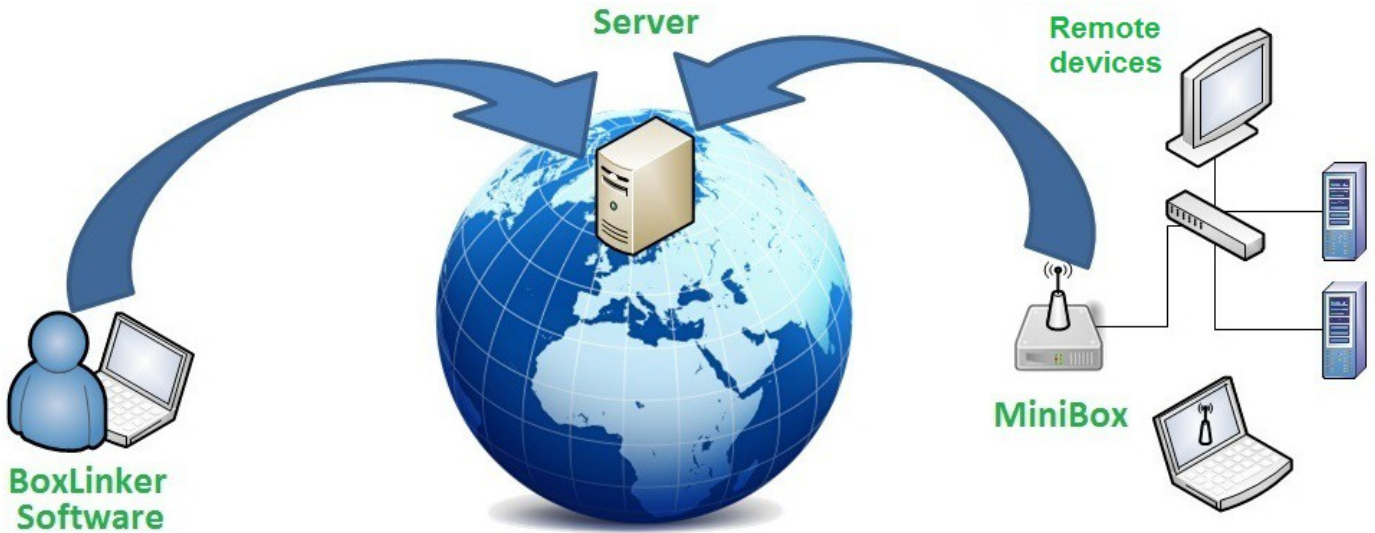


fig.2 – Connection diagram of remote devices (machinery, installations, etc.) using the Mini-Box and BoxLinker software

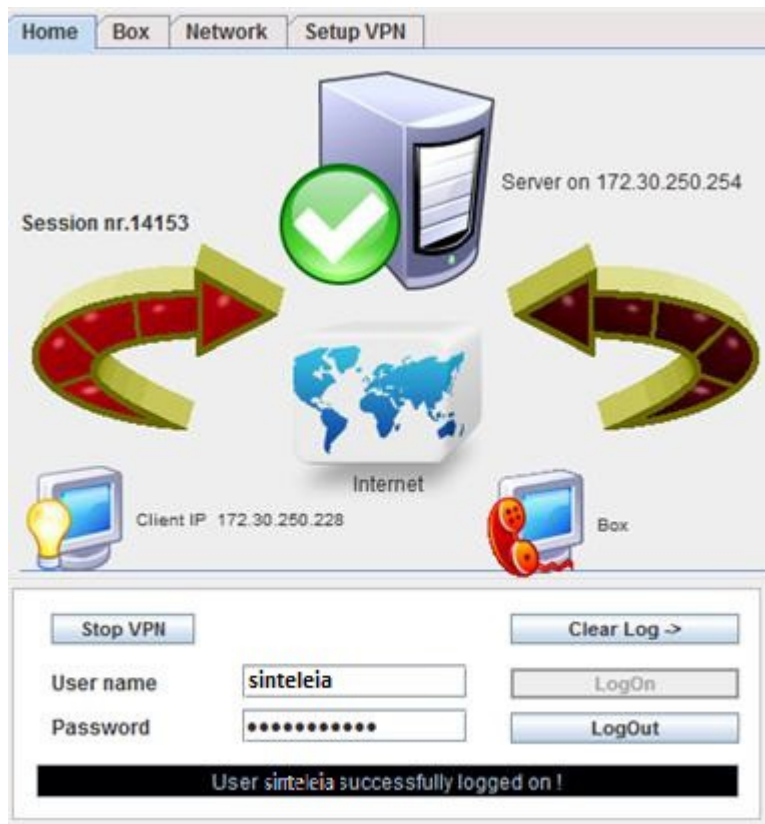


fig.3 – Login and connection enable-disable window of BoxLinker VPN software

Order Informations			
Model	Connectivity	Power Supply	Size (mm)
MiniBox WXI	Ethernet, WiFi	100-240Vac / 12Vcc adapter (italian plug)	168 x 157 x 30
MiniBox WGI	Ethernet, WiFi, GSM, GPRS, 3G, 4G	100-240Vac / 12Vcc adapter (UK plug)	
MiniBox WXK	Ethernet, WiFi	100-240Vac / 12Vcc adapter (US plug)	
MiniBox WGK	Ethernet, WiFi, GSM, GPRS, 3G, 4G	100-240Vac / 12Vcc adapter (US plug)	
MiniBox WXU	Ethernet, WiFi	100-240Vac / 12Vcc adapter (US plug)	
MiniBox WGU	Ethernet, WiFi, GSM, GPRS, 3G, 4G	100-240Vac / 12Vcc adapter (US plug)	

Note on TradeMarks cited on this document:

Sintéleia® is a registered trademark by Sintéleia Srl
Windows® is a registered trademark by Microsoft Corporation.